



## iClock880-H

Large Capacity Fingerprint Time & Attendance and Access control Terminal

iClock880-H time attendance and access control terminal adopts ZKSoftware latest ZEM800 platform with ZKFinger 10.0 algorithm to enhance identification speed. The device can store 50000 fingerprint templates. iClock880-H features ZK's high performance, high image quality optical fingerprint sensor. The patented optical sensor is resistant to scratches and impact. the device has camera and

3.5" color TFT-LCD display. The communication interface of the device includes TCP/IP, RS232/485 and USB-Host. Backup battery is standard in case of power failure. The device has professional access control function which can be used in multi-factor identification modes including fingerprint, password, RFID card or any combination.

---

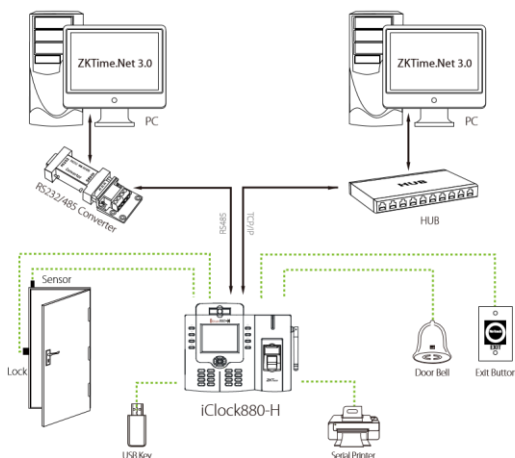
### Features

- 50,000 templates (1: N) and 800,000 records.
- Multimedia 3.5" TFT screen.
- Internal camera and Photo-ID support the user's photo display and make T&A application more visible and reliable.
- Built-in backup battery.
- Optional integrated proximity or smart card reader.
- Built-in USB port allows for manual data transfer when network isn't available.
- 8 user-defined function keys.
- Relay contacts for lock and alarm.
- Multi languages support.
- Audio-visual indications for acceptance and rejection of valid/invalid fingers.
- SDK available for OEM customers and software devel opers.

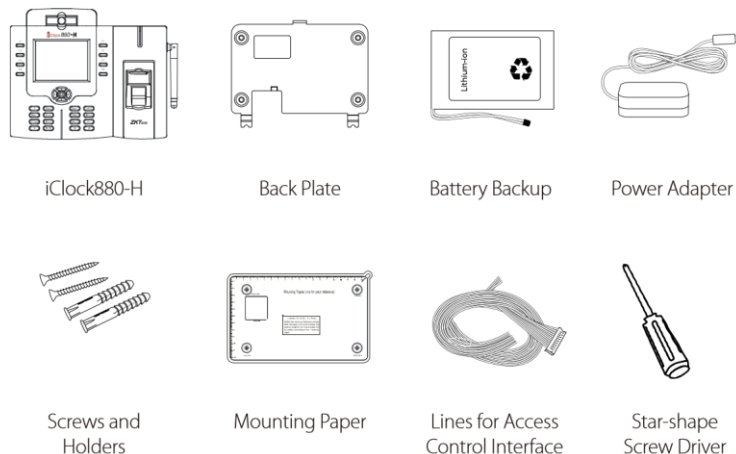
# Specifications

Fingerprint Capacity	50,000
Transaction Capacity	800,000
Hardware Platform	ZEM800
Sensor	ZK Optical Sensor
Algorithm Version	ZK Finger v10.0
Communication	TCP/IP, USB-host, Wi-Fi(Optional)
Standard Functions	Workcode, SMS, DST, Scheduled-bell, Self-Service Query, Automatic Status Switch, T9 input, Anti-passback, 9 digit user ID, photo-ID, Camera, Built-in Battery
Access Control Interface for	3rd Party Electric lock, Door Sensor, Exit Button, Alarm, Door Bell
Wiegand Signal	Input & Output
Optional Functions	ID/Mifare/HID, External, Printer, ADMS
Display	3.5 inches TFT Screen
Power Supply	12V DC 3A
Operating Temperature	0°C - 45°C
Operating Humidity	20% - 80%
Dimension	213×178.2×47.5 mm
Gross Weight	1.95 kg

## Configuration



## What's in the Box



ZKTECO CO.,LTD.  
[www.zkteco.com](http://www.zkteco.com)  
 E-mail: [sales@zkteco.com](mailto:sales@zkteco.com)

© Copyright 2017. ZKTECO CO.,LTD. ZKTeco Logo is a registered trademark of ZKTeco or a related company. All other product and company names mentioned are used for identification purposes only and may be the trademarks of their respective owners. All specifications are subject to change without notice. All rights reserved.

